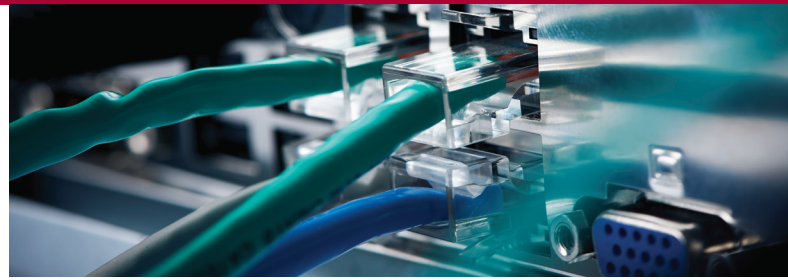


Storage Video Server (SVS)



NVR and mass storage in a single system

High Performance, Reliable & Scalable solution for Video Surveillance

In the history of the surveillance industry, there has never been more focus on Quality, Reliability and Cost Efficiency when it comes to selecting products for large CCTV projects. Fibrenetix Storage Video Server (SVS) has been designed to meet these ever growing needs.



The SVS is based around high-performance server technology, offering dual Xeon processors combined with Fibrenetix award winning RAID-6 engine, developed to support large video streams. Fibrenetix use the same technology in our range of high-end broadcasting and 3D video editing products which ensure you never lose a frame or a single second of video footage.

Fibrenetix SVS range has been certified to run with Milestone IP video management software, offering support for more cameras per NVR and longer retention capabilities than any other competitor in its class.

The Storage Video Server (SVS) supports a huge capacity of more than 2 Petabytes per NVR (using 10TB HDDs) with Fibrenetix scalable Iceberg technology.

The reliability and quality is truly enterprise class, with hot swappable PSUs, hard disk drives and cooling fans.

If an even higher level of fault tolerance is required, the Storage Video Server (SVS) can be upgraded to support remote replication and server clustering.

Supporting more than 500* cameras with H.264 image compression (CODEC), the Storage Video Server offers one of the best 'price per camera / cost per gigabyte' ratios in the industry. With the capability to retain data for periods of 90 days, or even 180 days, even with a limited budget. The Storage Video Server (SVS) comes as standard with a Windows user interface and an easy to use GUI for quick, problem free installation and maintenance. Offering an outstanding solution for any mid to large Video Surveillance Installation.

** Subject to NVR IP video management software & camera resolution*



Hot-swap Fan Modules



Hot-swap PSU

fibrenetix

Unique caddy system, offers full protection of data

- Fibrenetix caddy system has been designed to offer a vibration free environment for high performance SAS drives and 7.2K RPM SATA-III drives
- The caddy has a unique 'gearbox' design which controls the force used each time a caddy is removed or inserted - protecting the backplane and hard drives
- SVS supports 2.5" and 3.5" hard drives in the same caddy, using SAS, SATA-III and SSD (Solid State Drives) with capacities of up to 10TB per drive

ICEBERG technology, provides more than 2 Petabytes of storage capacity

- Storage Video Server supports Fibrenetix ICEBERG scalable storage technology. Offering a total storage capacity of up to 2 Petabyte per server (using 10TB HDDs)
- Up to 4x JBODs, with a capacity of up to 600TB per JBOD can be attached to the built-in SAS expander connection
- ICEBERG technology offers a massive bandwidth of up to 2400MB/sec using 4x lane 6Gbit SAS connection

Flexible design with multiple expansion

- Fibrenetix Storage Video Server (SVS) comes with 5x PCIe expansion slots – ranging from 4x lane to 64x lane technology
- The expansion slots can be used to install additional ethernet adators, or 10Gbit network cards, for increased performance
- 8Gbit Fibre Channel HBAs can also be installed – offering connectivity to SAN (Storage Area Networks) and remote data replication
- 8GB cache memory installed as standard, upgradeable to 512GB per SVS

Industry leading platform, ensures maximum compatibility

- Storage Video Server is based on the Intel Xeon 64bit platform, with support for the latest E5-2600 Intel multi-core processors – offering up to 16 cores in dual processor configuration (QPI up to 8GT/sec, according to Intel Inc)
- SVS comes as standard with Microsoft Storage Server 2012 R2 installed, but can be ordered without an operating system – offering customers the flexibility to install an alternative OS, such as Linux, or other applications
- Windows Storage Server 2012 R2 provides NAS (Network Attached Storage) features including: File Sharing, Replication, Snapshot, File De-duplication, and iSCSI Target Connectivity SVS

Technical Specifications

| Storage Video server | RS9-86x Series | RS9-1662 Series | RS9-1664 Series | JBOD Expansion UDS-606x Series |
|--------------------------------|--|--|--|--------------------------------|
| No. of Drive Bays | 8 | 16 | 16 | 60 |
| Optional 2 × 10Gbit Support | Yes | Yes | Yes | - |
| No. of Onboard LAN Ports | 2/4 | 2 | 4 | - |
| No. of PSUs | 2 | 2 | 2 | 2 |
| Hot-swap Components | HDDs, Fans, PSUs | HDDs, Fans, PSUs | HDDs, Fans, PSUs | HDDs, Fans, PSUs |
| No of 6-core E52600 Intel CPUs | 1 (upgradeable to 2) | 1 (upgradeable to 2) | 2 | - |
| Max. cores per CPU | 8 | 12 | 12 | - |
| Memory: Standard / Maximum | 8GB / 512GB | 8GB / 512GB | 8GB or 16GB / 512GB | - |
| Maximum HDD Capacity | 10TB | 10TB | 10TB | 10TB |
| Storage capacity (gross) | 80TB | 160TB | 160TB | 600TB |
| Max Capacity – Incl. Expansion | 2480TB | 2560TB | 2560TB | - |
| Hardware RAID Levels | 0, 1, 3, 5, 6, 50, 60 | 0, 1, 3, 5, 6, 50, 60 | 0, 1, 3, 5, 6, 50, 60 | - |
| Default Operating System | Windows Storage Server | Windows Storage Server | Windows Storage Server | - |
| Dimensions – mm (D × W × H) | 700 × 444 × 2U | 700 × 444 × 3U | 700 × 444 × 3U | 910 × 444 × 4U |
| Product Codes | RS9-862-861-M12-A3 RS9-862-862-M12-A3 RS9-864-861-M12-A3 RS9-864-862-M12-A3 | RS9-1662-861-M12-A3 RS9-1662-862-M12-A3 | RS9-1664-861-M12-A3 RS-1664-1661-M12-A3 | UDS-6062-J31 UDS-6063-J31 |

*Specifications are subject to change, without prior notice.