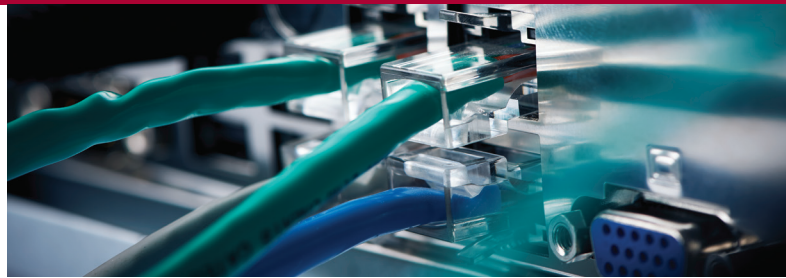


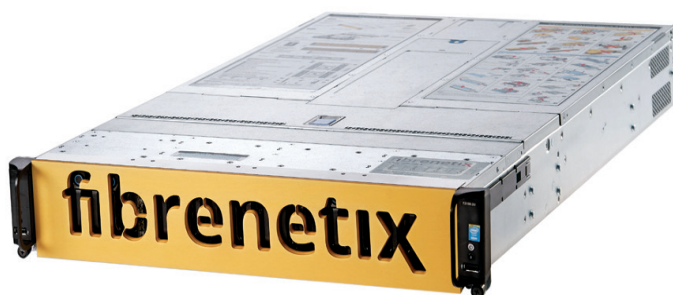
# Network Attached Storage (NAS)



## NAS and mass storage in a single system

High Performance, Reliable & Scalable solution for Video Surveillance

In the history of the surveillance industry, there has never been more focus on Quality, Reliability and Cost Efficiency when it comes to selecting products for large CCTV projects. Fibrenetix (NAS) has been designed to meet these ever growing needs.



The SVS (NAS) is based around high-performance server technology, offering dual Xeon processors combined with Fibrenetix award winning RAID-6 engine, developed to support large video streams. Fibrenetix use the same technology in our range of high-end broadcasting and 3D video editing products which ensure you never lose a frame or a single second of video footage.

Fibrenetix SVS (NAS) range has been certified to run with Milestone IP video management software, offering support for more cameras per NVR and longer retention capabilities than any other competitor in its class.

The SVS (NAS) supports a huge capacity of more than 5 Petabytes per NAS (using 12TB HDDs) with Fibrenetix scalable Iceberg technology.

The reliability and quality is truly enterprise class, with hot swappable PSUs, hard disk drives and cooling fans.

If an even higher level of fault tolerance is required, the Storage Networked Attached system (NAS) can be upgraded to support remote replication and server clustering.

Supporting more than 300\* cameras with H.264 image compression (CODEC), the Storage Video Server offers one of the best 'price per camera / cost per gigabyte' ratios in the industry. With the capability to retain data for periods of 90 days, or even 180 days, even with a limited budget. The Storage NAS comes as standard with a Windows user interface and an easy to use GUI for quick, problem free installation and maintenance. Offering an outstanding solution for any mid to large Video Surveillance Installation.

The Fibrenetix NAS series, also comes in an MTS version (Multi-node) offering 4x NAS serves in a Ultra dense 2U form factor. The MTS-series are build for Large CCTV installations, requiring a low Power consumption and low BTU - Each Node has optional Dual processor (+14 cores each)  
A true Datacenter solution.

\* Subject to NVR IP video management software & camera resolution

**fibrenetix**

## Unique caddy system, offers full protection of data

- Fibrenetix caddy system has been designed to offer a vibration free environment for high performance SAS drives and 7.2K RPM SATA-III drives
- The caddy has a unique 'gearbox' design which controls the force used each time a caddy is removed or inserted - protecting the backplane and hard drives
- SVS supports 2.5" and 3.5" hard drives in the same caddy, using SAS, SATA-III and SSD (Solid State Drives) with capacities of up to 12TB per drive

## ICEBERG technology, provides more than 6 Petabyte storage cluster

- Storage Video Server supports Fibrenetix ICEBERG scalable storage technology. Offering a total storage capacity of up to 7 Petabyte per server (using 12TB HDDs)
- Up to 5x 102 bay JBODs, with a capacity of up to 1.224TB per JBOD can be attached to the built-in SAS expander connection
- ICEBERG technology can be offered with GPFS (General Parallel File System) - offering One Large File system - Fully redundant and Cluster enabled.

## Technical Specifications

Storage Video server	Quad Node MTS-4862-1681-M12N	Quad Node MTS-4862-32162-M12N	RS10-E8-1662-iS4101	JBOD Expansion UDS-6063-J31 UDS-60102-J31
No. of Drive Bays	8	8	16	60 or 102
Optional 2x 10Gbit Support	Yes	Yes	Yes	-
No. of Onboard LAN Ports	4 per node	4 per node	4	-
No. of PSUs	2	2	2	2
Hot-swap Components	HDDs, Fans, PSUs	HDDs, Fans, PSUs	HDDs, Fans, PSUs	HDDs, Fans, PSUs
No of E5-26xxv4 Intel CPUs	1 (upgradeable to 2)	2	2	-
Max. cores per CPU	14	2x14	12	-
Memory – Standard / Maximum	8GB / 1024GB	8GB / 1024GB	8GB / 1024GB	-
Maximum HDD Capacity	2TB	2TB	12TB	14TB
Storage capacity (gross)	16TB	16TB	192TB	1440TB
Max Capacity – Incl. Expansion	6024TB	6024TB	6024TB	-
Hardware RAID Levels	0, 1, 3, 5, 6, 50, 60	0, 1, 3, 5, 6, 50, 60	0, 1, 3, 5, 6, 50, 60	-
Default Operating System	Windows Storage Server	Windows Storage Server	Windows Storage Server	-
Dimensions – mm (DxWxH)	750x444x2U	750x444x2U	700x444x3U	910x444x4U

\*Specifications are subject to change, without prior notice.

## Flexible design with multiple expansion

- Fibrenetix SVS (NAS) comes with 5x PCIe expansion slots – ranging from 4x lane to 64x lane technology
- The expansion slots can be used to install additional ethernet adators, or 10Gbit network cards, for increased performance
- 8Gbit Fibre Channel HBAs can also be installed – offering connectivity to SAN (Storage Area Networks) and remote data replication
- 16GB cache memory installed as standard, upgradeable to 1024GB per NAS (Dual CPU optional)

## Industry leading platform, ensures maximum compatibility

- The NAS is based on the Intel Xeon 64bit platform, with support for the latest E5-2600 Intel multi-core processors – offering up to 28 cores in dual processor configuration (QPI up to 8GT/sec, according to Intel Inc)
- The NAS comes as standard with Microsoft Storage Server 2012 R2 installed, but can be ordered without an operating system – offering customers the flexibility to install an alternative OS, such as Linux, or other applications
- Windows Storage Server 2012 R2 provides NAS (Network Attached Storage) features including: File Sharing, Replication, Snapshot, File De-duplication, and iSCSI Target Connectivity



Hot-swap Fan Modules



Hot-swap PSU